

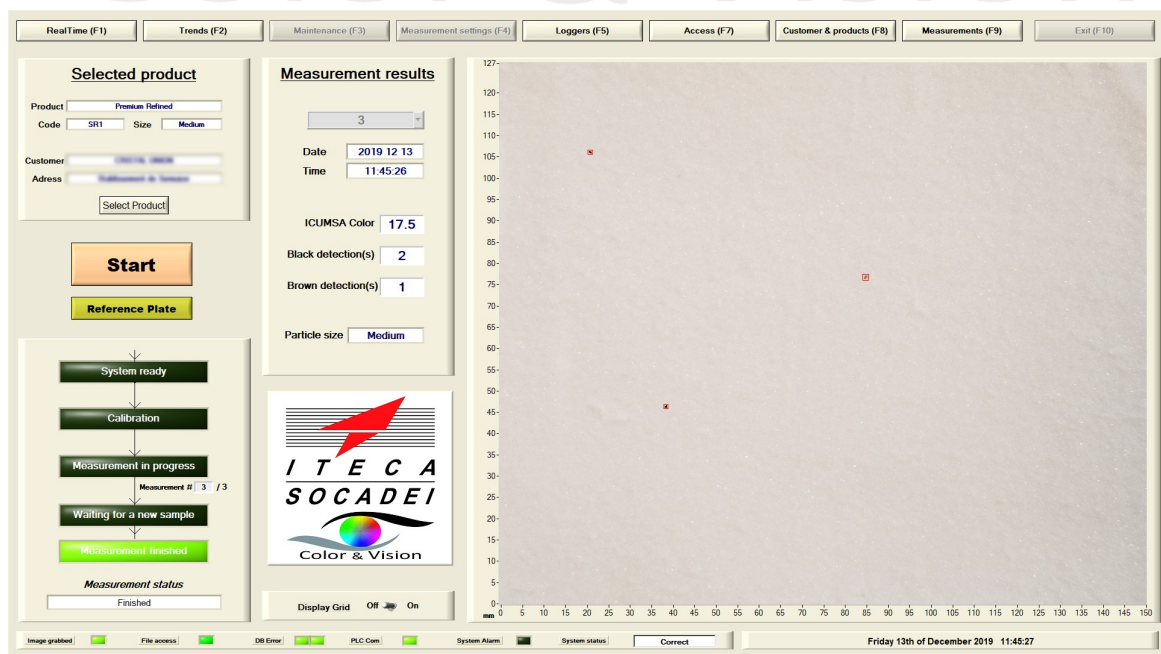
Colocompact®

Lab colour and spots analyser



- Measure the colour and convert it in ICUMSA
- Detect and count black spots from 90 x 90 µm
- Store data with the image of the sample for a complete traceability
- Provide instantaneously a ticket proving the compliance with customer specification
- Guarantee the quality of all sugar shipped to customer

Color & Vision



On-line image analysis
in the Sugar and CaCO₃ industries since 1993



Laboratory colour and black & brown spots analysis

Using a very high resolution sensor and a reliable LED lighting system, the laboratory analyser Colocompact® performs an accurate image acquisition of the sugar surface on a 120x120 mm sample.

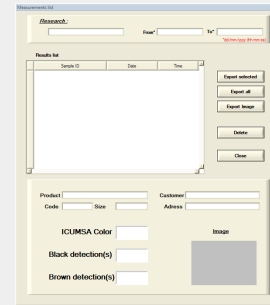
Through a specific image analysis and after a correlation with the laboratory standard ICUMSA method, the Colocompact® measures the average colour of the sample.

It also detects and counts the black & brown spots on the sample surface.

Once the sugar sample is prepared and put inside the Colocompact® for analysis, the operator enters customer and product information into the system (Quality type, reference, batch number, etc.).

The system starts its measurement cycle with a calibration and a series of 'n' measurements, 'n' being configurable by the operator.

Every image is analysed and the results presented in real time on the main display and registered for future access.



A ticket recalling the product reference and the measurements is produced as a proof of compliance with the customer specification.

It guarantees the quality of the sugar shipped to customer.

Principle and performances

Colocompact® features:

- Stainless steel enclosure with light sources, calibrated camera and PLC
- Computer with ITECA image analysis software running on Windows 10 Pro



The main display shows sugar image, its Icumsa colour and highlights black & brown spots.

The Colocompact® calculates the average colour calculated over the 'n' measurements taken on the same image. The results and the historical trends are immediately available and stored for a complete traceability.

It delivers a ticket with all the product and final customer information.

Additional communication can be set up to transfer the data to an additional computer for further analysis.

Maintenance can be performed remotely by ITECA engineers using the available customer Internet access, with secure screen sharing software.

Colocompact® specifications

Digital camera	Very High resolution, colour
Lighting	LED s
Communications	4-20mA, Modbus TCP, Profibus DP, ProfiNet
Calibration	Performed before each analysis, no drift
Dimensions and weight	89 x 53 x 35 cm, 35 Kg
Power supply	110/230 VAC, 50/60 Hz, 0.5kW
Air supply pressure	5 Bar
Enclosure	Stainless steel 316L, IP65

ITECA SOCADEI
445 rue Denis Papin 13100 Aix en Provence - France
+33 442 977 700 www.iteca.fr Color.vision@iteca.fr

ITECA SOCADEI reserves the right to change this document without prior consultation

